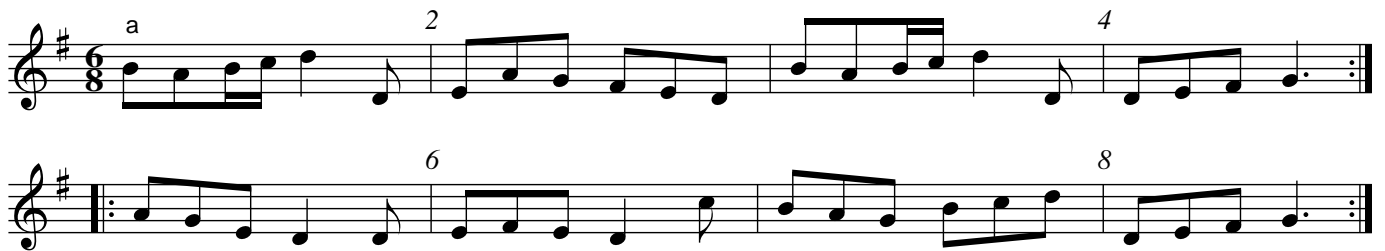


Saturday Night (Bledington)



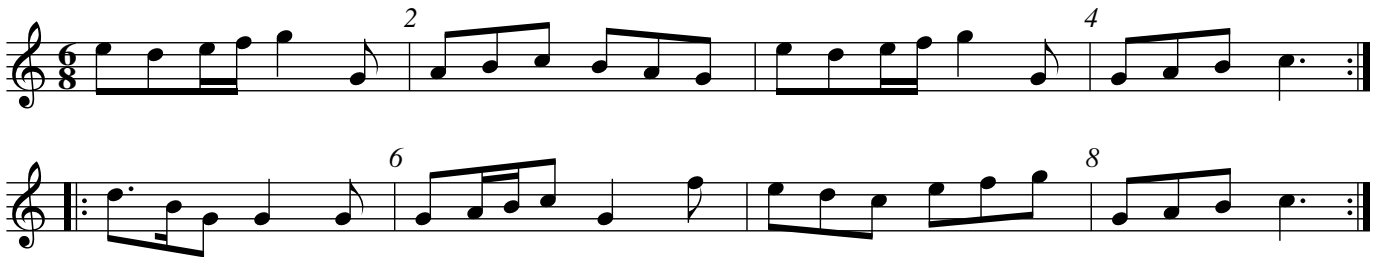
Alternative bar 1, 1st half (a)



may have been in this rhythm but difficult to settle

Source: Charles Benfield, fiddle, Bould, Oxon, 11 Sept. 1909, coll. Cecil Sharp no 2397

Saturday Night (Bledington)



Source: Charles Benfield, fiddle, Bould, Oxon, 20, 27 June 1924, coll. FA Richards, RK Schofield, PD Fox

RK Schofield noted Saturday Night from George Hathaway, probably in 1937. He played in G. Apart from a broken rhythm in the first half of Bar 6, his version was the same as Charles Benfield played in 1909, except that Bar 5 was as CB played in 1924.

© Gloucestershire Traditions